



**wesley
players**
theatre company

presents

A comedy written by A.R. Gurney

The DINING ROOM



Friday April 25 at 7:00pm
Saturday April 26 at 7:00pm
Sunday April 27 at 2:00pm

Tickets: \$15 at wesleyplayers.org

Please note that this show contains mature subject matter and is recommended for ages 13+.

Come witness this incredible feat of acting and leave thinking about the stories A.R. Gurney weaves together about humanity, W.A.S.P. culture, and what we value.

This one is definitely not to miss!

An unforgettable evening of theatre performed at:

Performing Arts Academy (PAA)

5690 County Line Place

Highlands Ranch, CO 80126

**Also
July 19 & 20
at Historic Elitch Theatre**
Watch for more info
historichelitchtheatre.org

Produced with written authorization from Dramatists Play Service, Inc. April 2025



WELCOME!

A sincere thank you for joining us for the show, from everyone at WPTC.

Creating community, one show at a time... for 25 years!

In 2000, Leigh and James Ramsey convened a small group of St. Luke's members to put on a production of *Godspell*, the beginning of the Wesley Players Drama Ministry at the church. The vision was to bring together people of all ages and experience levels, from within the church and the wider community, to perform drama productions and musicals. Wesley Players gratefully accepts donations from audiences and, over the years, has contributed more than \$350K to various St. Luke's domestic and international missions. Almost 20 years and over 50 shows later, the Wesley Players became an independent 501(c)(3) and the Wesley Players Theatre Company (WPTC) remains in residence at St. Luke's UMC. WPTC is delighted that some of those early and founding members are still performing and leading WPTC today! As the company celebrates its 25th anniversary this season, and its 60th show, the core values haven't changed. We encourage diversity and community in every production, providing audiences with theatre experiences that inspire and entertain. Visit WesleyPlayers.org and enjoy *The Dining Room*.

Thank you for your support!



WPTC Board of Directors:

Jack Kennedy *Chair*

Dyani Galligan, *Treasurer*

Sharon Oliver

Sandy Larson

Erynn Shryack, *Vice Chair*

Leigh Ramsey, *Secretary, Founder*

Mike Hollyman

Roberta Hamilton-Griggs, *Artistic Director*

Venmo Option

Scan this QR code or choose @wesleyplayers to make a donation using the Venmo app on your phone.

Thank you for your generosity.





The Dining Room is A.R. Gurney's in-depth look into the lives of a vanishing species: the upper-middle-class White Anglo-Saxon Protestant (WASP). Through a series of vignettes set in a dining room (or rather many dining rooms), it offers a slice-of-life view of WASP culture throughout the 20th century. At first glance, *The Dining Room* might seem like a museum piece. We embraced that idea, framing the play as a cultural exhibit showcasing a fading way of life. Yet even as traditions, social norms, and values evolve, something deeper remains.

What endures are the people themselves. Their awkwardness, tenderness, pride, and contradictions. Their desperate need to be heard, loved, and understood. With around 60 characters played by eleven actors, this play showcases the beautiful and messy sides of humanity. In these scenes of breakfasts, affairs, birthday parties, and family meltdowns, we find a mirror—not of a particular class or decade, but of ourselves.

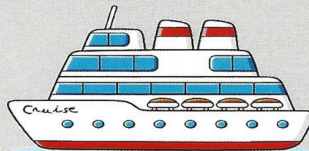
At our first rehearsal, I asked the ensemble to share their associations with dining rooms. Some recalled spaces that were pristine but never used. Others remembered them as hubs for school projects, chores, or clutter. There were stories of meaningful conversations during formal meals, and of tension that simmered beneath a veneer of decorum. We were struck by how many of Gurney's scenes echoed our own lives—like sympathetic resonance reverberating across generations.

That's the heart of this play. Though it captures a specific cultural tradition, it embodies something universal. Through shifting expectations and fading rituals, *The Dining Room* invites us to reflect on how we connect with one another—and how our foibles, mistakes, and love transcend time.

The final scene feels frozen in amber, a moment from a world that no longer exists. But its emotional truth remains. Gurney set out to portray a fading culture, but in doing so, he highlighted something timeless: our shared humanity.

Thank you for joining us at the table.

Elise Collins, *Director*



KAM BOLES

Land and Sea Travel Specialist

303-908-1363 - KamBoles1125@gmail.com

"It's a good day to have a SEA day!"



CAST & CREW

Joey Bathje

Boy, Nick, and Tony

Stephen Collins

*Psychiatrist, Grandfather,
Standish, and Harvey*

Audrey Elling

*Agent, Mother, Grace, Sandra,
Dora, Beth, Helen, Aunt Harriet,
Bertha, and Guest*

Brody Hartmann

Michael, Billy, Fred, and Chris

Roberta Hamilton-Griggs

*Sally, Girl, Ellie, Aggie, Winkie,
Old Lady, Kate, Emily, and Ruth*

Mike Hollyman

Howard, Stuart, Gordon, and Jim

Spencer Lamoreaux

Father, Ted, Dick, and Host

Jenn McMahan

*Annie, Carolyn, Peggy, Margery,
Nancy, Sarah, Meg, Claire, Annie,
and Guest*

David Sanders

*Museum Curator, Client,
Brewster, Alex, and David*

Ken Sanders

Architect, Paul, and Guest

Andrew Vega

Arthur, Ben, and Guest

Elise Collins

Director

Jon Scheer

Co-Stage Manager

Cathy Collins

*Co-Stage Manager, Costume Designer,
and Props Designer*

Morgan Toomey

*Museum Staff, Assistant Stage
Manager, and Dresser*

Elysia Vigil

Lightboard Operator and Volunteer

Lily VanBeek

*Museum Staff, Sound Designer,
Soundboard Operator, and Run Crew*

Matthew VanBeek

Scenic Designer

Valerie Benavides

*Assistant Costumer, Props Assistant,
and Dresser*

Laura Bathje

Assistant Costumer and Props Assistant

Moe Martin

Dresser

Jane Damsgard

Hair and Makeup Designer

Marisa Dominguez

*Marketing, Volunteer, and
Front of House*

Brenda Newton

Front of House Volunteer

Amanda VanBeek

Front of House Volunteer

Sharon Oliver

Poster and Program Design



The DINING ROOM

ACT ONE

- Scene 1: 1980s.....** *“Something to Go By”*
- Scene 2: 1970s.....** *“Dividing Up the House”*
- Scene 3: 1930.....** *“A Pleasant Breakfast”*
- Scene 4: 1970s.....** *“Term Paper”*
- Scene 5: Mid 1930s.....** *“Your Decision”*
- Scene 6: 1930s.....** *“A Departure”*
- Scene 7: Late 1970s.....** *“Opening Up the Ground Floor”*
- Scene 8: Late 1960s.....** *“Be Good Little Children”*
- Scene 9: 1950s.....** *“A Piece of the Nest Egg”*
- Scene 10: 1970s.....** *“Becoming Unglued”*
- Scene 11: Late 1960s.....** *“A Family Thanksgiving”*

15-MINUTE INTERMISSION

ACT TWO

- Scene 12: 1970s.....** *“Home Alone”*
- Scene 13: Early 1980s.....** *“Tea in the Dining Room”*
- Scene 14: 1970s.....** *“Anthropology Project”*
- Scene 15: Early 1980s.....** *“Can’t Go Back”*
- Scene 16: 1950s.....** *“An Insult at the Club”*
- Scene 17: 1970s.....** *“A Few Words of Farewell”*
- Scene 18: Early 1980s.....** *“The Perfect Party”*

CAST & CREW BIOS



Andrew Vega

Arthur, Ben, and Guest

Andrew began performing for the Wesley Players in 2023, joining the cast for *Broadway Under the Stars*. He made his stage musical debut for WPTC in Disney's *Beauty and the Beast*, portraying the role of Monsieur D'Arque.

Andrew has also volunteered for several WPTC productions since then, and has been a part of other shows across the Denver-metro area, while continuing to pursue his Bachelor of Fine Arts in Musical Theatre at MSU Denver. Andrew also has experience in music directing, stage management, set building, and other aspects of production assistance. Andrew is one of a select few visually impaired performers in the Denver area, becoming the first to perform with the Wesley Players, and continues to be a strong advocate for accessibility and inclusion across local performing arts and beyond. He continues to pursue his passion and dreams of performing while dabbling in other hobbies and interests such as writing, video games, and content creation. He is also a proud cat dad/brother to his "partner in crime" Marley.



Audrey Elling

Agent, Mother, Grace, Sandra, Dora, Beth, Helen, Aunt Harriet, Bertha, and Guest

Audrey has performed in other Wesley Players productions, including *Broadway on Broadway*,

A Christmas Carol, *Much Ado About Nothing*, *The Importance of Being Earnest* and several Readers Theater productions. She is happy to be an amateur among professionals. For almost 40 years Audrey moonlighted as a script writer, voice-over artist and on-camera corporate spokesperson, specializing in training videos, promotions, and documentaries. She is the recipient of the Heartland Regional Emmy® Award in Narration. She is old enough to have grown up in a dining room similar to the one on our stage, with all the pomp and accoutrements of that perhaps vanishing, but certainly fascinating, culture.



Brody Hartmann

Michael, Billy, Fred, and Chris

This is Brody's fourth production with Wesley Players, having played Robertson Ay in *Mary Poppins* and Ensemble parts for *The Secret Garden* and *Broadway on Broadway*.

Prior to joining Wesley Players, he was in numerous stage productions, including *Beauty and the Beast*, *Legally Blonde*, and *The Addams Family*. Offstage, he is also a film actor across the Denver area. When not acting, you can find Brody lying on the floor, staring at the walls, and trying to come up with a single thing to make him sound more interesting for his bio.



David Sanders

Curator, Client, Brewster, Alex, and David

David is thrilled to be joining Wesley Players again for this amazing production of *The Dining Room*. This is his third Wesley Players production, having

previously performed in *The Secret Garden* as Dickon and *A Christmas Carol* as Young Scrooge/Caroler. He was also the Assistant Stage Manager for *Mary Poppins*. David is looking forward to sharing the stage with his dad. Enjoy the show!



Jenn McMahan

Annie, Carolyn, Peggy, Margery, Nancy, Sarah, Meg, Claire, Annie, and Guest

Jenn is so happy to continue performing with the Wesley Players this season. She previously

appeared in *The Secret Garden*, *A Christmas Carol*, *Beauty and the Beast*, and most recently as Winifred Banks in *Mary Poppins*. Jenn spent many nights as a child at her grandparents' dining room table (both sitting at it and under it), and feels the same love and reverence for it that so many of these characters do.



Joey Bathje

Boy, Nick, and Tony

Joey is thrilled to be making his Wesley Players debut as a part of *The Dining Room*. Having performed in some productions in middle school and high school, he

is very excited to be acting again and to be a part of such a talented and welcoming group of people. His parents' dining room is no longer a dining room, and since he was a kid, it has transformed from the room where they would eat for special occasions to a room that is part of a huge open kitchen. There is still a table in the same spot on the floor, though.



Ken Sanders

Architect, Paul, and Guest

Ken is excited to be doing his first play in a very long time. It's great to share the experience with his son as well. This is his second time with Wesley Players. The first

adventure was being in *The Secret Garden*. Looking forward to many opportunities ahead.



Mike Hollyman

Howard, Stuart, Gordon, and Jim

This is Mike's first appearance in a play and his 8th performance with the Wesley Players. He started as the Mayor of Whoville in 2019 and has enjoyed performing in

nearly every show since. Mike enjoys performing

CAST & CREW BIOS



with his kids in shows. Mike loves the opportunities to challenge himself with roles and the amazing support from the cast, crew, and artistic staff.



Roberta Hamilton-Griggs

Sally, Girl, Ellie, Aggie, Winkie, Old Lady, Kate, Emily, and Ruth
Roberta has been performing in and directing musicals, plays, commercials, and operas since she was a child in her backyard, telling

her sisters where to move and how to sing. Some of her favorite productions include directing *Fiddler on the Roof*, *Little Women* and *Beauty and the Beast* for The Wesley Players, and performing as Audrey in *Little Shop of Horrors*, Sally Bowles in *Cabaret* and the Psychiatrist in *Agnes of God*. Of course, her favorite productions have always been her daughters, Taylor and Kylie! As a fulltime educator for many years, it has been a long time since she has been onstage herself! Thanks to Elise Collins for helping make this dream come true and for all of her excellent direction. Growing up, our dining room was a special place to connect as a family, sharing the stories and questions of our day. I wonder which of AR Gurney's tales will make you think of your formative days...



Spencer Lamoreaux

Father, Ted, Dick, and Host

Spencer is excited to be a part of Wesley Players again, having most recently portrayed George Banks in *Mary Poppins*. He previously appeared in multiple productions,

including *The Secret Garden*, Reader's Theater version of *Much Ado*, *A Christmas Carol*, and *Broadway Under the Stars*. One of my favorite memories around the dining table, growing up in a family of six children and two parents, is that we would draw names and pretend to be the other family member through dinner. It was often chaotic, but full of memories.

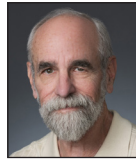


Stephen Collins

Psychiatrist, Grandfather, Standish, and Harvey

Stephen is in his 45th production with WPPT! Favorite roles include the King in *The King and I*, Thénardier in *Les Misérables*,

Ouiser in *Steel Magnolias*, and Ben in *The Secret Garden*. Stephen loves performing with his wife and daughter, and enjoys painting sets for Wesley Players. Stephen has degrees in Engineering Physics, Communication, and Theology. He holds a PhD, and is a professor of communication at Pikes Peak State College who specializes in speeches throughout American history. He also teaches ballroom dance and loves Shakespeare, puppeteering, astronomy, astrophysics, geology, geography, painting, walking, running, and practicing calligraphy.



Jon Scheer

Co-Stage Manager

Jon has a degree in theatre from the University of Michigan and has been involved in theatre productions for almost 70 years, both on stage and off. This is the

fourth Wesley Players production he has been a part of just this year. He looks forward to many more shows to come.



Cathy Collins

Co-Stage Manager, Costume Designer, and Props Designer

Cathy is a longtime WPPT player and has performed and worked behind the scenes with costumes and props numerous shows. Her

secret superpower is her ability to find things - from period-specific costumes to obscure props, like a salt cellar or a crystal ashtray. She enjoyed playing the narrator in WPPT's production of *Guys and Dolls*. Outside of theatre, she enjoys reading, crafting, dancing, playing the piano, and protecting the environment. It has been fun collaborating with her family on this project.



Morgan Toomey

Museum Staff, Assistant Stage Manager and Dresser

Born and raised in Littleton, CO, Morgan has enjoyed stage acting since the age of 3. This is Morgan's 6th Wesley Players

show, and she can't wait to do more. Other talents and hobbies include dance and crochet. When she's not acting, you'll find her reading the classics or spending time at her local quilting bee. Her love of all things Jane Austen and Tom Hiddleston inspires her at every turn.



Elysia Vigil

Lightboard Operator and Volunteer

Elysia is ecstatic to be working with Wesley Players again!

Previously, you could find her backstage as stage manager, or on stage as an actress. This time,

Elysia is trying out a new role as the Lightboard Operator! She is very excited to add this new skill to her toolbox!



Marisa Dominguez

Marketing Volunteer, and Front of House

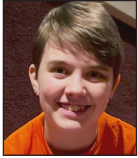
Marisa is thrilled to be back with the Wesley Players for this remarkable production! Marisa has been involved with the

Wesley Players since 2021. She loves being a part of the WPPT community in any way she can! From



CAST & CREW BIOS

performing, marketing, front of house, and run crew, she loves that Wesley Players gives her so many opportunities to learn and grow! She wants to thank you, the audience, for coming to support live community theatre! We couldn't do this without your support!



Lily VanBeek

Sound Designer, Soundboard Operator, and Run Crew

Lily is excited to be doing sound for her first time. Lily loves the theater community. She would like to thank her family, her best friend

Morgan, and The Wesley Players Theater Company for all the support they all give her. Lily would also like to thank Elise and the crews for all the work they put into this show. Lily's past performances included *Willy Wonka Jr*, *Once Upon a Mattress*, *Fearsome Pirate Frank*, *Beauty and the Beast* twice, *Cinderella*, *Rue*, *The Secret Garden*, *Scottish Tragedy*, *Mary Poppins*, and *The Lightning Thief*.

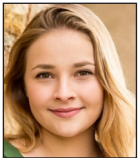


Valerie Benavides

Assistant Costumer, Props Assistant, and Dresser

Valerie is pleased to be a part of the tech team in this Wesley players' production! Previously, she was an ensemble player in the

Wesley Players production of *Mary Poppins*. Many thanks to this wonderful group of creative people.



Moe Martin

Dresser

Moe is a recent musical theater graduate from Colorado Mesa University. When she is not on stage, she loves costuming and directing. This is her first time

working with the Wesley Players, and she looks forward to participating in more shows.



Elise Collins

Director

Elise Collins is excited to make her directorial debut with Wesley Players Theatre Company. She has worked in the Colorado theatre community for 10 years

as a director, actor, facilitator, teacher, and fight choreographer. She deeply believes in live theatre's power to cultivate empathy, compassion, and social change. She has performed with the Colorado Shakespeare Festival, Bas Bleu Theatre, Impact Playback, and Affinity Arts Consulting. This is her fifteenth Wesley Players' show! Her favorite roles include *Mary Poppins* in *Mary Poppins*, *Meg* in *Little Women*, *Emily Webb* in *Our Town*, and *Fight Director* for *Beauty and the Beast*. She earned her MBA, MA in Theatre & Performance Studies, and BFA in Theatre Performance from CU Boulder. Recent directing credits include: CU Boulder's *The Laramie Project* (Director), the American Shakespeare Center's production of *Othello* (Assistant Director), and CU Boulder's *Photograph 51* (Director). She would like to thank her family, friends, and her partner, Shawn, for their support and encouragement. She is incredibly grateful for the opportunity to direct *The Dining Room* with WTPC and work with this incredible ensemble!

ARTISTIC DIRECTOR'S NOTE



I am honored to be the Artistic Director for this fine organization, especially during this, our 25th Anniversary Season! Whether exploring the bittersweet moments of A.R. Gurney, tapping our way through *Mary Poppins*, allowing for shorter rehearsal schedules with our Musical Reviews and Readers Theater performances, or singing a little 20th century opera, the Wesley Players Theatre Company has tackled all aspects of the performing arts! Wesley Players prides ourselves on our great love of the theatre and our community. We are making new friends into family with each show, and we hope you might decide to join us as well!

Roberta Hamilton-Griggs, *Artistic Director*



Dear Audience,

THANK YOU SO MUCH

for being here with us!!

A bit of theatre etiquette can help everyone enjoy the show, so.... thank you for:

1. Arriving on time to the show and after the intermission. If you are late, please wait to be seated by an usher at the appropriate time.
2. Turning off your phone, and never texting or taking a call in the middle of the show.
3. Keeping quiet, except when laughing or clapping. Never humming along or singing.
4. Never taking photos or recording the show. This is against copyright laws and is very distracting to the actors on stage.
5. Staying seated and not fidgeting. And, please keep your feet near your seat. Often actors are entering through the aisles.
6. Taking children who are having trouble staying quiet out to designated areas where they can continue watching the show.
7. Covering your mouth and/or exiting if you need to cough.
8. Enjoying your concessions in the lobby area (not in the theatre) and disposing of your trash or recycling appropriately.

THANK YOU!

2024-25 DONORS

\$5000 Maestro Circle

Carol Anderson-Lehman
Tony & Amber
Grebmeier
Mike Hollyman

\$250 Patron

John Church
Deborah Ransick
J.M. Wightman

\$2500 Producer Circle

Erynn & Nick Shryack

\$100 Supporter

David Ballard
Jim & Adoree Blair
Kay & Ed Coryell
Janet Forbes
Sandra Gibbons
Roberta Hamilton-Griggs
Jerry Hertzler
Sue & Charles Jude
Jack & Kathleen Kennedy
Lisa Lehnus
Bob & Sharon Oliver
Richard Spong

\$1000 Director Circle

Torin Blair
The Cho Family
Rachel Flesner
Dyani Galligan
Rowena Helman
Mary & Jerry Schade
Darcy Tibbles
Judy Weiler

\$500 Artistic Circle

Nancy & Greg Boyer
Regina Boone
Teri & Sam Burget
Jean Clark
Cathy & Stephen Collins
Jane Damsgard
The Hanson Family
Ken Fong & Betsy Keyack
Randy & Sandy Larson
Mervine Music:
Barbara & Ken Mervine
Leslie Porter
Jim & Leigh Ramsey
Mary & Jerry Schade
Catherine Scheer
Jana Wesson
Maria Yost

VOLUNTEER CHAMPIONS

Sarah Barnes
Tim Boles
Sam Burget
Darren Chilton
Cathy & Stephen Collins
Marisa Dominguez
Ken Fong
Denton Hanson
Jack & Kathleen Kennedy
Bob & Sharon Oliver
Leigh Ramsey
David Sanders
Erin Sides
Beth & Austin Simmons
Noelle Spath
Jon Takayama
The VanBeek Family
Jana Wesson
All Performers

**10% of my commission
goes to my clients' choice of
charity including Wesley Players
Theatre Company & St. Luke's!**

**My real estate team works hard to provide
a personalized experience. We offer a
menu of service options unequalled in the
market. When working with Porter Properties,
you can feel secure that we have your
back. I am a certified negotiation expert
as well as a senior real estate specialist.**



**Leslie Porter
303-521-5957**

Porter Properties/
Keller Williams DTC
6300 S. Syracuse
Way #150
Centennial, CO
80111



**PORTER
PROPERTIES**

25 YEARS OF PRODUCTIONS!

Month-Year-Production

Nov-00	Godspell	Nov-15	Broadway on Broadway 2015
Mar-01	The Other 12 Disciples	Mar-16	Into the Woods
Nov-01	Mary & Joe 4Ever	Apr-16	The Princess Bride (Readers Theater)
Nov-02	Joseph & the Amazing Technicolor Dreamcoat	Nov-16	Steel Magnolias
Nov-03	Don't Kick the Turkeys	Mar-17	Godspell - 2012 Revised Version
Mar-04	Steel Magnolias	Nov-17	Christmas on Broadway 2017
Nov-04	Jesus Christ Superstar	Mar-18	Joseph & the Amazing Technicolor Dreamcoat
Mar-05	Pure As The Driven Snow	Nov-18	Christmas on Broadway 2018
Nov-05	Fiddler on the Roof	Mar-19	Seussical
Apr-06	Godspell	Oct-19	Forbidden Broadway's Greatest Hits
Nov-06	The Sound of Music	Feb-20	The Music Man
Mar-07	God's Favorite	Apr-21	Nunsense: The Mega-Musical
Oct-07	The Music Man	Jun-21	Broadway Under the Stars 2021
Mar-08	Chekov & Cheesecake	Oct-21	Young Frankenstein (Readers Theater)
Nov-08	You're a Good Man Charlie Brown	Nov-21	All Together Now!
Apr-09	Requiem for A Superstar	Feb-22	The Pirates of Penzance
Oct-09	Our Town	Jun-22	Broadway Under the Stars 2022
Feb-10	Little Women	Nov-22	Guys and Dolls (concert version)
Sep-10	Tied to the Tracks	Dec-22	A Mountainville Christmas (Readers Theater)
Dec-10	Amahl & the Night Visitors	Mar-23	Little Women
Mar-11	Broadway on Broadway 2011	Aug-23	Broadway Under the Stars 2023
Sep-11	Dear Edwina	Sep-23	Much Ado (Readers Theater)
Nov-11	A Christmas Carol	Nov-23	A Christmas Carol: The Musical
Mar-12	She Loves Me	Mar-24	Beauty and the Beast
Nov-12	Much Ado About Nothing	Aug-24	Broadway on Broadway 2024
Mar-13	The King & I	Oct-24	The Secret Garden
Oct-13	The Importance of Being Earnest	Nov-24	A Mountainville Christmas Carol (Readers Theater)
Feb-14	The Pirates of Penzance	Feb-25	Mary Poppins, The Broadway Musical
Oct-14	Nunsense	Apr-25	The Dining Room
Mar-15	Les Misérables		
Oct-15	Love Letters (Readers Theater)		

COMING UP!

Jun-25 Dear Edwina



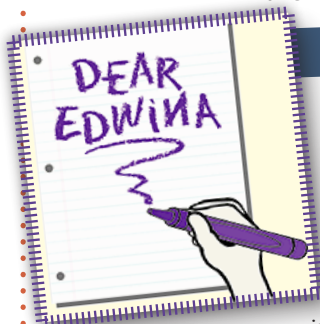
**wesley
players**
theatre company

What's Coming Next?

WPTC is excited for the future! We plan to continue our tradition of offering family-friendly musicals, as we also add a variety of other events, including small operas and plays! We welcome new performers, artists, tech crew members and volunteers.

JOIN US!

WPTC holds auditions before each production. Check our facebook page or the website for information.



SUMMER MUSICAL

June 20-22, 2025: *Dear Edwina* is a children's musical (adults performing for children!) about a young girl named Edwina Spoonapple who runs a "Dear Abby"-style advice show from her garage, offering advice on everything from birthday parties to table etiquette. The musical, written by Zina Goldrich and Marcy Heisler, is a heartwarming, funny story about the joys and challenges

of growing up, and how each of us must find and use our own voice and talents! Great for the whole family!

AUDITIONS: We are excited to hold auditions for ***Dear Edwina*** on **May 7 from 6:00-9:00pm** (bring a song and a childhood story). All actors, singers, and dancers ages 16 and over are welcome to audition. Sign up at wesleyplayers.org. Rehearsals are Wed. evenings, Sat mornings and Sunday afternoons. Performances will be held at St. Luke's United Methodist Church on June 20, 21, and 22!

Our shows rely on volunteers from the community. If you are interested in performing, playing in the pit, helping with sets, or other tech roles, please let us know! We would love to have you join our theater community!

Want to keep in touch?

Follow us on Facebook: @WesleyPlayersTheatreCompany
Sign up on our mailing list: www.WesleyPlayers.org
Email us: info@wesleyplayers.org

wesleyplayers.org