



The Chronicle



Mark your calendars now for some memorable Christmas fun and activities at St. Luke's.

The Hanging of the Greens will be at 8:00 am on Saturday, December 2. This year there will be special activities and decorating opportunities for the children downstairs, so bring the whole family and join us in some fun and fellowship. And just in case you don't have time for breakfast before you come, we'll have bagels, juice, and donuts on hand!

The Tree Lighting will begin at 6:30 pm on Sunday night, December 3. We'll meet in the sanctuary for a few words and some wonderful music to set the mood before lighting our beautiful tree in the narthex. Bring a plate of cookies to share afterwards to accompany our punch and fellowship. See you there!

Women's Retreat - Rest, Reflection & Renewal

By Yvonne Amrine

On a cold October weekend a group of women from St. Luke's took time to rest, reflect, and renew their faith. The atmosphere of the Glen Eyre Castle was enchanting and almost magical with the light dusting of snow crystals that bejeweled the trees the entire time we were there. The lodge provided us with a comfortable room and a cozy fireplace to sit, relax, reflect, and contemplate our busy lives and issues that were on our minds. It was a chance for the women of St. Luke's to get to know each other, to find out more about ourselves-and each other. It was a chance to connect in a meaningful way to other members of our church family.



There were lots of soothing activities: meditation, visualization and even Tai Chi and Qi Gong movement. We learned that most of us share something in common. As women, we are all too busy, too stressed and too concerned with everyone else's needs to take care of our own! We decided that we would support each other through a process of daily renewal. To that end we decided to revisit our progress on a monthly basis. And to invite the rest of St. Luke's women to join us.



If you would like to meet more women from St. Luke's who share your concerns we are meeting on the second Wednesday of each month at 6:30 (after the Wednesday Night Supper.) Childcare can be reserved by calling the church office. The first meeting is scheduled for November 15th. In this first meeting, we will discuss the purpose for this group and take some time to discuss our own progress in daily renewal. Esther will share some of her library as possibilities for discussion topics. For more information, please call Yvonne Amrine at 720-733-1491.



Record Turnout for Hayride

Record numbers attended the St. Luke's Churchwide Ministries annual hayride and preview of fall colors at the Stockton Plum Creek Stables this year. We were blessed with approximately 110 members gathered together to enjoy the roasted hotdogs, homemade smores and fellowship around the fire. It truly is an event many of all ages look forward to each year. We hope all of you many plan to join us next year!



INSIDE THIS ISSUE

Meet St. Luke's: Dave Cupp.....	P. 3
New Members.....	P. 3
The "Lay"test News.....	P. 4
Little School.....	P. 4
Habitat For Humanity.....	P. 4
Cambodia Update.....	P. 5
UMW Update.....	P. 5
Music.....	P. 6
SLY News.....	P. 7

...AND MUCH MORE!

Pastors notes

Getting Mugged by Ministers

How many visitors do you think we have had the last three Sundays?

October 15: 62

October 22: 57

October 29: 74

Those are the ones who signed in. As many as 40 have been first-time visitors, who both signed in and gave us their addresses. If only 1% of our congregation invited someone to church, we might have as many as 50 or 60 first-time visitors.

Clearly, we cannot introduce guests and give them our welcoming loaf of home-made bread in the same way we used to. How can we hold on to the values the bread represents (warmth, welcome, symbolism—bread of life, etc.), but do it in a way that better reflects our vision of being Invitational, Relational and Missional?

More than simply saying, "Welcome," we are asking you personally to take our guests back to the bread, then bring them to meet Esther and me. In that way, each one gets to experience a personal welcome from you and us.

On Sunday afternoon, Esther and I have been identifying the first-time visitors, then going to their homes and giving them a St. Luke's mug (a clear glass mug with the St. Luke's logo), which also has a *Chronicle* and other information about St. Luke's. We don't go in, but simply say, "We are glad you were in church this morning. We hope we can be your church, and look forward to seeing you again."

Regardless of our size, or the number of visitors, this approach seems to me to reflect better both the core values of our vision, and the values inherent in giving the bread. This also represents one way our Strategic Vision shapes what we do: By asking what the value is (in any given ministry), and how we can best live that out.

To learn more about how the Vision might shape who we are and what we do, you are invited to Experience the Vision, Live the Spirit on Sunday November 12, beginning with lunch at 12:15. See you there!

Shalom,

Dick



Prayer Chain

Please keep these members and friends of St. Luke's in your prayers:

- Crystal Arndt's mother, Lois Clary;*
- Connie Shoemaker's nephew, Michael Shoemaker,*
- Don Sayer, friend of Wayne Bell*
- Marie Blue's mother, Barbara Joukovsky*
- Gordon and Gretta Johnson's son, Paul Johnson;*
- Charlotte Robinson;*
- Andrea Mezger's friend, Susan Nitchneider;*
- Marilyn Beer, friend of Cindy Holmstoen;*
- Tammy Bell's uncle, Rudy Rudolph;*
- Mary Godsey's aunts,*
- Vida Light and Illa-V Willette;*
- Corina Hall's friend, Jake Page;*
- Park Anderson, Phoebe Mitchell's father;*
- Vonnie Stransky, friend of Kay Swanson;*
- Kerry Timm's friends, Jeri Millard; and*
- Sandi Lindabl's mother-in-law, Rita Lindabl.*

We continue to pray for:

- Margaret Payne;*
- Laura Griffith's mother, Carol Pifer;*
- Marshall Kubn;*
- Lauren Updegrave;*
- Connie Shoemaker's mother, Mildred Johnson; and*
- Ryan Kirkness, cousin of Deb Whitelam.*

We extend our prayers and sympathy to:

- Forrest Marsh and family on the death of his father; and*
- Linda Moore and family on the death of her mother, Rita Brunswick.*



Please join us in prayers of joy and thankfulness on the following births:

A son, Davis Vorland, to Michelle Laskey and Mark Ebel on 9-2-2000.

A daughter, Amanda Louise, to Craig and Kim Marlowe on 9-14-2000.

If you have a prayer concern, please call the church office or Dianne Johnson (303-791-3477).

New Members

B

Welcome!

October 2000

Mark Ebel & Catherine Laskey
(Davis)
851 West Dry Creek Road
Littleton

David & Marie Fornof
9582 South Desert Willow Way
Highlands Ranch

Bob & Kris Kinney
(Hayden & Emily)
327 East Brentford Circle
Highlands Ranch

Carolyn McIntosh
7101 South Acoma Street
Littleton

Danny & Susan McIntosh
(Bennett & Emerson)
7101 South Acoma Street
Littleton

Mike & Cindy Nasca
(Christina & Melissa)
9638 South Townsville Circle
Highlands Ranch

Jerry & Tiffany Niblett
(Trey)
9974 South Gwendelyn Place
Highlands Ranch

Tad & Laura Zgoda
(Will & Alex)
1553 East Sunset Ridge Road
Highlands Ranch



Dave Cupp

Lay Leader

In previous articles, we have profiled lay leaders Monty Hoffman and Heather Harding. This month, we will find out more about our third lay leader, Dave Cupp. Dave is a charter member of St. Luke's, having joined in July of 1983 when the church met at Northridge. One of his interests is preserving the history of St. Luke's, which met in homes and at Powell Middle School beginning sometime in 1982.

Dave's own history began on a farm in Paragould, Arkansas, where he lived until joining the Air Force. After that he moved far away from home, serving in Hawaii at the time it became a state. He has studied business administration at the University of Hawaii and at Memphis State University. His career has included work in construction, sales, and now real estate. Dave came to Colorado in 1980 with a sales job, and decided not to leave. He and his wife, Mary, have three children and five grandchildren, and feel lucky to have a grandchild living near by.

Dave's hobbies include handyman chores, woodworking and golf. His list of upcoming projects includes working on the choir loft at St. Luke's. This isn't unusual for a man who has served on all three building committees for St. Luke's, and who has contributed to our sweat equity over his seventeen years of membership. Even after living through the changes of the last few years, Dave says that St. Luke's "still feels like a new church... new members today have an opportunity to mold the future of the church."

One of Dave's most significant roles as a lay leader has been to speak to new member classes about the history of the church. It's not surprising, then, that Dave knows quite a bit about the history of lay leaders in the church. His early church experience in Bard, Arkansas was belonging to a four church charge. One minister visited each church in turn, and the lay leader would fill in on the weeks that the minister was at the other churches. In fact, our church Discipline requires that there be at least one lay leader at a Methodist church to serve as a liaison between the laity and the clergy. St. Luke's is not only a single charge church, we have not one but two clergy members, which gives us two delegates to the annual conference. Lay leaders generally take on that delegate role, where larger church issues are discussed. They then become liaisons between the larger organization and individual church committees, such as the ad council or finance committee. They help to interpret the way the individual church fits with the larger church body.

Compared to the historical church or even to other Methodist churches around the country, St. Luke's lay leaders are particularly active in both ministry and programs. Having three lay leaders helps to ensure that all three of our services can be served, as well as spreading out the duties of lay ministry, new member classes, baptisms, and committee work. Dave's own emphasis has been on new member classes, where a large number of St. Luke's membership has had the opportunity to meet him. His awareness of the lay leaders' connection to the members, the individual church, the larger church body, and the community make him a valuable member of the team.

Next Month - a return to Meet the Staff, introducing some of our newest staff members!



On Sunday, Oct. 22, third graders were presented with Bibles during two services



Little School Packed with Activity

If you haven't wandered downstairs lately, you are missing an exciting opportunity to liven up your life! Little School is always decorated with many kinds of creative artwork and colorful displays. The children have had fun learning about the seasonal changes and God's wonderful world. While we have really been enjoying our terrific fall, we know that colder winter weather will soon be here. Before the snow flies we will learn how God's critters prepare for a very cold winter, talk about our pilgrim and native American friends and start thinking about the birth of Baby Jesus! At the end of November, Christ Lutheran preschool will join us for a special Fire Safety Puppet show given by the Littleton Fire department. We know that this is a very important learning experience. For Thanksgiving Little School adopted two needful families from Denver and the children will be bringing items to fill two big baskets with food for their Thanksgiving. We are so pleased to see our Little School families share their abundance with others. Our music teacher Ms. Laura will be spending a great deal of time helping us to prepare for our upcoming Christmas program with holiday songs and finger plays.

We would like to say a special thank you to the Arnot family for their generous contribution to our playground, a new dome climber, which is a very popular item! Thank you so much! We would also like to thank one of our Dad's, Mr. Shepherd, for his donations of computer materials and for Mr. Ken Fong and Cindy from St. Luke's for all of their time getting Little School on line and networked! We are really becoming high tech!

Little School has added to new teachers to our ever-growing staff, Ms. Phyllis and Ms. Wendy, assisting in our pre-school and Parent's Day Out. We are very pleased to have them working with us at Little School. Ms. Vicky (our mural painter) will return to substitute for a short time while Ms. Tushka takes a very special trip to visit her family in South Africa! Always something exciting happening around Little School!

Please remember that our doors are always open for visitors and we hope that you will drop by!

Lovingly,
Ms. Kay ☺



A few afternoons away from home can help make a home! Habitat for Humanity

St. Luke's is once again participating with six other Denver area churches, in Project Loaves and Fishes. This year, the group is building a home for a family in Brush, CO. The funds are raised, so all that remains is to come together as a community of faith to complete construction. The goal is to have the family in their new home by this Christmas, so work crews will be needed each weekend through early December. Opportunities to build for Habitat also exist for those who would prefer to work during the week (Wednesday - Friday). This build is located in Aurora and is being sponsored by Nationwide Insurance.

Additional information regarding these builds is available each Sunday at the Habitat for Humanity table in the Narthex or from Joe Pedley at (303)683-8423.

Bricks for Hope - Mission Possible Cambodia

"Bricks for Hope" are on sale before and after church services each Sunday until January. These bricks symbolize the actual building materials we will be using to build the community center in Siem Reap, Cambodia.

By purchasing a brick for \$25, you will receive a certificate of appreciation, and purple ribbon, your name in a cemented time capsule in the actual building, and an invitation to a special presentation of mission possible upon the members return in January. This is an opportunity to support the building project in Siem Reap. Your gift is needed and greatly appreciated.

Buy one brick, or buy one for each family member, give them as Christmas gifts for the hard to buy for people on your list.

The "Lay" test News:

Invitational, Relational, Missional, and Spiritual

A Message from our Lay Leaders - By Monty Hoffman

It is important to remember, as we embark on our new vision for St. Luke's, that being invitational, relational, and missional are things that we do because we are called to them because we are Christians, not things that we do to become Christians. If we do these things while we are focused on our relationship with God, they will be rewarding, fulfilling, and they will make us more aware of our calling. Without this focus, they will leave us empty and unfulfilled.

The Wesleyan vision of God's Love for all people means that a personal relationship with God is not for a select few, very spiritual people, but something that is available to everyone. We can use our invitational, relational, and missional experiences to strengthen our relationship with God because they can also be spiritual experiences.

How do we nurture the spiritual aspects of these experiences? First of all, live your life so that you reflect God's Love for you in all of your relationships. Next, through prayer, study of the word, fellowship, and acts of mercy, invite God's Grace into your life and your experiences. Finally, live your life gratefully. Life is precious and fragile, be grateful for every day.

Remember that when we are invitational to others, we are invitational to God. When we are relational to others, we are relational to God. When we are missional to others, we are missional for God.

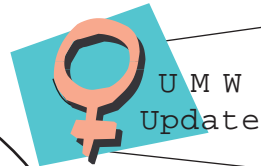


St. Luke's Children's Holiday Shop

Saturday, December 9, 2000 9 am-1 pm.

St. Luke's Children's Holiday Shop provides a Christmas shopping experience for children, up to age 12. They can purchase gifts for mom, dad, sisters, brothers, grandparents, teachers, and others. They can avoid mall shopping and get great gifts at discounted prices. 50¢-\$4 per gift. Adult volunteers will help the children with shopping and will wrap their gifts while they wait!

Adult volunteers are needed to help set up on Friday, Dec. 8, from 9 am-12 noon and to help on Sat., either 8-11 am or 11 am-2 pm. If you would like to volunteer, please call Diane Tolleson at 303-683-1295.

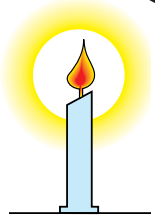


Inspirational Quote:
We all have angels guiding us... They look after us. They heal us, touch us, comfort us with invisible warm hands...

What will bring their help?

Asking. Giving thanks. — *Sophy Burnham*

Thank you, Thank you to Shamina Fletcher and her outstanding Women's Retreat Committee, Barb Fink, Angie Gregory, Kathy Haynes, and Susan Northrup. Your hard work, great ideas and outstanding commitment are truly appreciated! Additionally, thank you to Janet Harm for your wonderful Tai Chi presentation!



St. Luke's UMW presents: **A Winter Wonderland at our Annual Candlelight Dinner**
We cordially invite all women of St. Luke's to join us for a wonderful evening of fun and fellowship.

Thursday, December 7, 2000 • St. Luke's Fellowship Hall • Arrive at 5:45 pm

An Italian dinner will feature your choice of vegetable or meat lasagna. The Women's Bean Project will cater our dinner as well as present the speaker for the evening. Tickets must be purchased no later than November 26, 2000. Tickets will be sold between services on Sundays, beginning November 5 through November 26, for \$16 per person. Tickets will be available at the Taste of St. Luke's Event, November 12. Due to our catering requirements, no refunds after November 26. Questions? Call Marilyn Birky 303-471-9257 or Marcia Enger 303-471-7463. For more information on the Women's Bean Project, please visit the UMW bulletin board.

Cambodia Update

The \$16,000 raised so far in the Siem Reap campaign successfully reached Joseph Chan and was used to purchase four lots that cost about \$12,360. Joseph proposed to use \$1,200 of the remaining \$3,600 to build a wooden hut to house the mission group when we arrive in January. This would reduce the burden on host families, and the structure could be used to house students in the future. Unfortunately, the plan to use donated building materials has fallen through owing to a decision by one of the main



donors not to participate. Since it would cost more than they are worth to ship the materials that are still available, plans are now underway to purchase local building materials. Plans for a standard brick building measuring 8 m by 20 m are

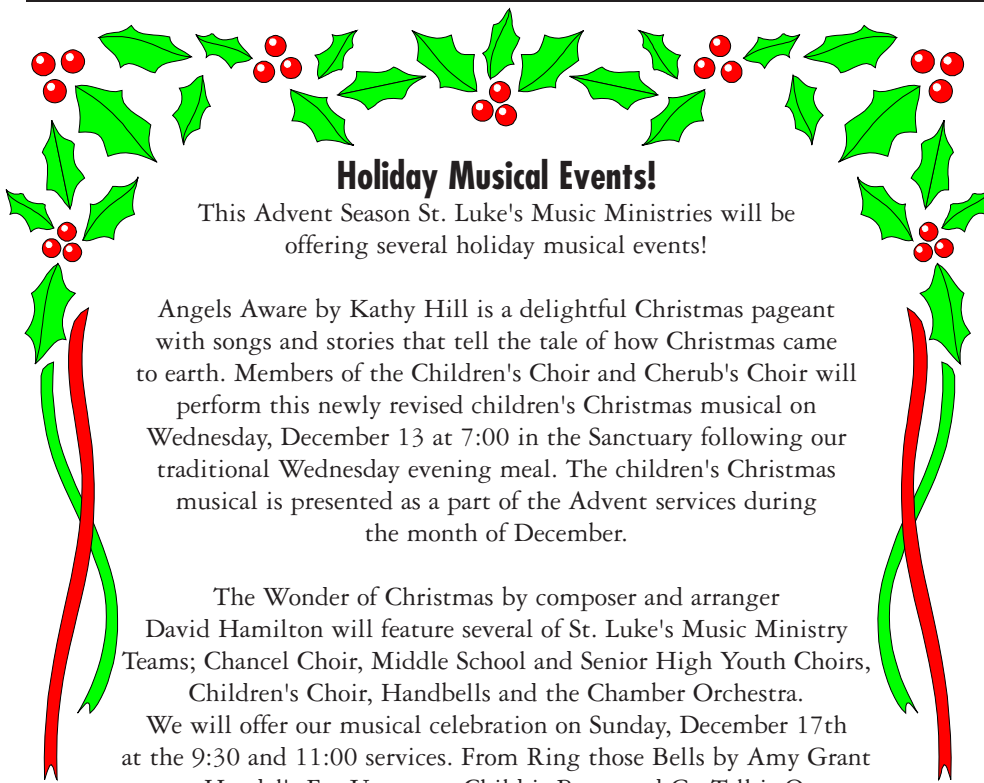
available through the Methodist church. Such a building would cost approximately \$15,000 to build. Since it is not clear whether we can raise this sum again in the amount of time remaining, our goal is now to set up the foundation and get the building started. A variety of fundraisers have been planned including another Big Band concert with a bake sale and concessions, T-shirts, and a spaghetti dinner associated with Godspell. We may also do another "Share in the Life of a Child" program such as the one done for Zimbabwe. It is hoped that we can also arrange for corporate sponsors.



St. Luke's Bridge Group For the thrill of an exciting evening of bridge, come join the St. Luke's Bridge Group. We aren't avid bloodthirsty players who know every card in everyone's hand by the third trick. We are your run of the mill social players who sometimes aren't even sure what our own cards are. In fact, we welcome beginning players. If you are just learning to play, don't hesitate to call one of our 'experts' (defined as someone who knows just a little bit more than you do) if you have a question.

Basically, the St. Luke's Bridge Group is a social gathering for those of us who enjoy playing bridge. The group is open to anyone who wants to play regardless of skill level, and because of the way we switch partners, a beginning player can do quite well. Single players can easily be accommodated. Usually we can accommodate players almost right up to the last day.

We meet every first Saturday of the month at the church except on holiday weekends. Our next meetings are on December 2nd and January 6th, Saturdays at 7:00 p.m. If you have any questions or would like to join us for a stimulating evening with the St. Luke's Bridge Group, please call John and Andrea Mezger at 303-791-7350 or Harvey Eastman at 303-791-1519. Be sure to bring a dish of your favorite snack or dessert, as our bridge games can bring out an appetite.



Holiday Musical Events!

This Advent Season St. Luke's Music Ministries will be offering several holiday musical events!

Angels Aware by Kathy Hill is a delightful Christmas pageant with songs and stories that tell the tale of how Christmas came to earth. Members of the Children's Choir and Cherub's Choir will perform this newly revised children's Christmas musical on Wednesday, December 13 at 7:00 in the Sanctuary following our traditional Wednesday evening meal. The children's Christmas musical is presented as a part of the Advent services during the month of December.

The Wonder of Christmas by composer and arranger David Hamilton will feature several of St. Luke's Music Ministry Teams; Chancel Choir, Middle School and Senior High Youth Choirs, Children's Choir, Handbells and the Chamber Orchestra. We will offer our musical celebration on Sunday, December 17th at the 9:30 and 11:00 services. From Ring those Bells by Amy Grant to Handel's For Unto us a Child is Born, and Go Tell it On the Mountain to African Noel-there's something for everyone to enjoy.

Calling Strings and Woodwinds

During the Advent Season, the Music Ministry Team will be presenting a Christmas Cantata that will include a chamber orchestra similar to last year's event. We are primarily looking for strings and various woodwinds. If you are at all interested and can practice on Saturday mornings around 10:00 am beginning November 11th, please contact Jim Ramsey at 303.466.0080 or by email: jamesramz@aol.com.



Don't miss **Godspell**: Friday, Nov. 17 & Saturday, Nov. 18

Tickets available between services in the narthex. Admission is free!



Pumpkin Patch 2000:

Thanks to all who volunteered their time and purchased pumpkins and helped make our Pumpkin Patch a success!



St. Luke's Music Ministry

James Ramsey, Director of Music Ministries
(303) 466-0080 jamesramz@aol.com
Carrie Mallery, Associate Director of Music
(303) 346-8685

Alpha Ringers - Beginning Handbell Choir

Rehearsal time: Tuesday 6:00-7:00pm
Music Team Coordinator and Director:
Lisa Lewis (303) 221-6323

Big Band

Rehearsal time: Saturday 10:00-11:00am
Music Team Coordinator:
Bob Whetson (303) 791-4397

Brass Ensemble

Rehearsal time: Saturday 9:00-10:00am
Music Team Coordinator:
Ed Cooper (303) 850-9413

Chancel Choir

Rehearsal time: Thursday 7:30-9:00pm
Music Team Leader and Director:
James Ramsey (303) 466-0080

Cherub's Choir

Rehearsal time: Wednesday 6:30-7:15pm
Music Team Coordinators & Director:
Janet Harm (303) 683-8248
Ellen Severe (303) 683-8723

Children's Choir

Rehearsal time: Sunday 8:55-9:25am
Music Team Coordinators & Director:
Kay & Ed Coryell (303) 741-1748

Children's Christmas Musical

Rehearsal time: Wednesday 6:30-7:30pm
Music Team: Heather Harding, Kay Coryell, Sallie Suby-Long, James Ramsey

Flute Ensemble

Rehearsal time: Saturday 8:00-9:00am
Music Team Coordinator:
Ruth Smith (303) 683-0676

High School Youth Choir

Rehearsal time: Sunday 5:00-6:00pm
Music Team Coordinator and Director:
Diane Whetson (303) 791-4397

Middle School Youth Choir

Rehearsal time: Sunday 5:00-6:00pm
Music Team Coordinator and Director:
Lise Takayama (303) 791-2812

Sonrise Band

Rehearsal time: Wednesday 7:30-9:00pm
Music Team Coordinator:
Jim McCurry (303) 470-6198

Tintinnabulators - Handbell Choir

Rehearsal time: Tuesday 7:00-8:30pm
Music Team Coordinator and Director:
Lisa Lewis (303) 221-6323



November SLY Activities

Friday, November 3

- 4:00-6:00 All Youth, Clean-up Pumpkin Patch
- Sr. High Retreat. Leave after Pumpkin Patch clean-up - Return Sunday afternoon.

Sunday, November 5

- New Sunday School Classes Begin grades 7-12 (see right)
- 2:30-5:00 Middle School SLY - Bowling! Check SLY-Line for more details.
- 5:00-6:00 Middle School Choir (Includes 6th Grade)
- 6th Grade SLY - Check SLY-Line for details

Tuesday, November 7

- 6:15-7:00 a.m. Breakfast Club at Einstein's

Sunday, November 12

- 3:00-4:00 Youth Sunday Script Writing
- 4:00-5:00 Live Nativity Script Writing
- 5:00-6:00 Youth Choirs Rehearse
- 6:30-8:00 Sr. High SLY
- 6:30-8:00 Middle School SLY - "God on the Radio"
- 6th Grade SLY - Laser Tag
Check SLY-Line for details

Tuesday, November 14

- 6:15-7:00 a.m. Breakfast Club at Einstein's

Sunday, November 19

- 12:00-2:00 Youth Council
- No Youth Choir Rehearsals
- 5:00-8:00 Progressive Dinners
- Sr. High separate, 6th grade and Middle School combined.

Tuesday, November 21

- 6:15-7:00 a.m. Breakfast Club at Einstein's

Sunday, November 26

No Youth Activities

Tuesday, Nov. 28

- 6:15-7:00 a.m. Breakfast Club at Einstein's

☀ SLY - a place to grow, love, pray and laugh ☀

SLY Mission Statement

We, the youth of St. Luke's,

- J Are energetic, caring, friendly, one-of-a kind and crazy
- J Love to have fun in prayer, worship, mission and learning
- J Expand our boundaries by trying hard to meet new people, be inclusive, seek justice, show kindness and walk humbly with our God.
- J We are the Church, growing in every way!

(Like whoa!) Adopted by the St. Luke's Youth Council on October 8, 2000.

SLY's 2nd Annual Progressive Dinners will be on Sunday, November 19 from 5:00-8:00 p.m. The Sr. High SLY will be dining as one group and the Middle School and 6th Grade SLY will be together. Each group will go to one house for appetizers, another for salad, a third for the main dish and everyone will end the evening at the church for dessert. Host houses are still needed for each group as well as drivers. If parents or other adults would like to help with either the meals or with driving call Deb for Middle School/6th Grade or Dottie for Sr. High.

Second Session Fall Sunday School Classes

Begin November 5.

At 9:30:

Study of Judaism - Sr. High, led by Felice Plain, this class will look at our Jewish heritage. Meets in one of the youth rooms.

J.C. and the Claus: a look at the real Christmas story- Sr. High, led by Dave Guevara. Meets in one of the youth rooms.

Who's who in the Christmas Story - Middle School, Kathy Balu, Kendra Mitchell, Martha Riley. Meets in 7th-8th grade room.

Get to Know Jesus - the sequel to Get to Know Your Bible, led by Chris Richards and Jim Hemphill. Meets in upstairs Conference Room across from the kitchen.

At 11:00:

Faith in Action continues for grades 6-8, led by Lynda Drake. Meets in the 7th-8th grade room.

Women of the Bible continues for Sr. High, led by Claire Alpert and Dottie Mann. Meets in the 6th grade room.

Youthline Changes to SLY-Line You know all those times you have seen the phrase "Check the Youthline for details?", well it has changed to "Check the SLY-Line for details." What the heck is the Youthline or SLY-Line anyway? It is your number one source for up-to-the-minute (okay, so sometimes it is up-to-the-week) information about what is happening for youth at St. Luke's.

How does it work?

Step 1 Pick up phone.

Step 2 Dial 303-654-7315.

Step 3 Hold phone to ear and listen to recorded message.

Step 4 Look for pencil to write down important SLY stuff.

Step 5 Try to replay recorded message because you couldn't find pencil in step 4.

Step 6 Call again since you can't seem to replay message in step 5 (see steps 2 & 3).

Step 7 Write down important stuff.

Step 8 Leave message for Dottie or Deb after the tone (If your message is really important, call them at home. SLY-Line is checked once or twice a week.)

See, calling the SLY-Line is a quick and easy way to find out what SLY is doing each week.

SLY-Line: 303-654-7315
Youth@stlukeshr.com

Deb Juarez: 303-932-0536
Deb@stlukeshr.com

Dottie Mann: 303-932-2712
Dottie@stlukeshr.com